

THE ZUNI TRIBE  
END OF TIMES PROPHECY

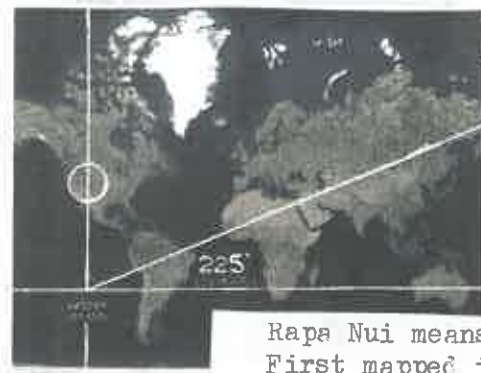
AND IT'S DIRECT CONNECTION TO GOD'S MATHEMATICAL SIGNS ON EARTH/IN HEAVEN

From left to right, showing a brief summary of GOD's geometry and landscaping, with the story of JESUS as the center of the riddle which inturn connects all the world's Holy mountains, sites, and prophets, and ancient histories and stories into HIS message.

This summary is geared to show it's relation to the Zuni Prophecy, and to fit it all on one page (by now, the reader has read the books on GOD's Signs to fully understand page

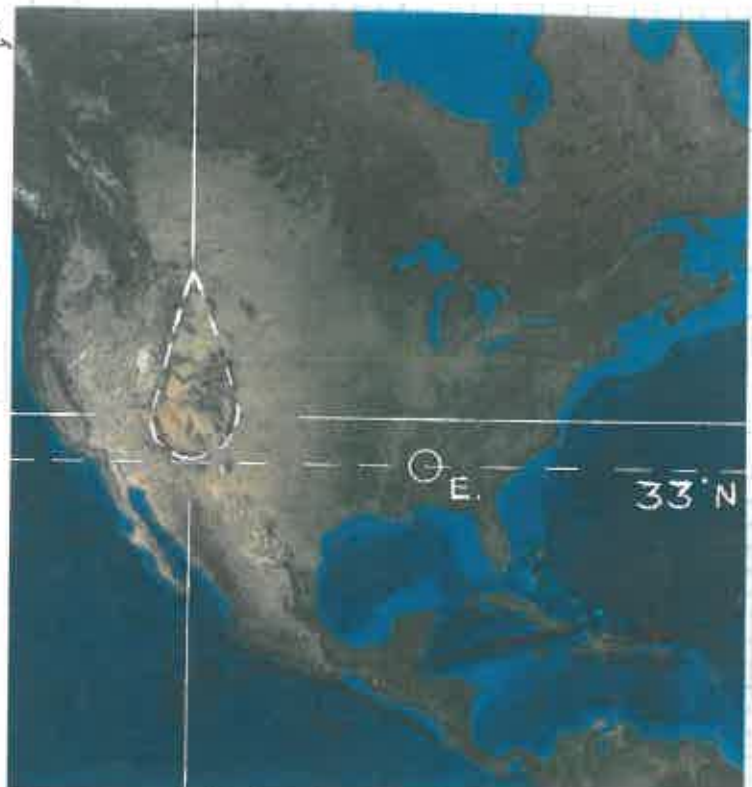
Showing GOD's main theme of JESUS, the cross, and the "tear" shapes (please see book on the over a dozen tears throughout Earth.) Here is a very brief, but, related rundown...

The location of these tears shows that GOD knew that mankind would break HIS heart.



Easter Rapa Nui Island

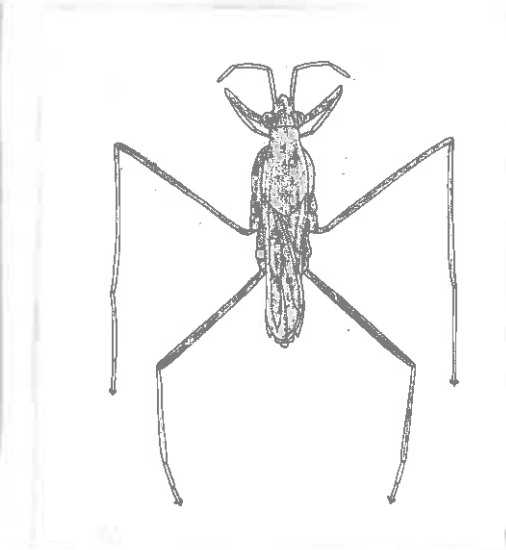
Rapa Nui means "navel of the world"  
First mapped in 1722 on Easter Sunday.



90 degrees north is Dine' Tribe Center of the world)



4.



Water Strider

Sea of Galilee, C.  
where JESUS-GOD'S son, walked on water.



B. Jerusalem

MONOGRAM OF JESUS  
IS A PROPHECY



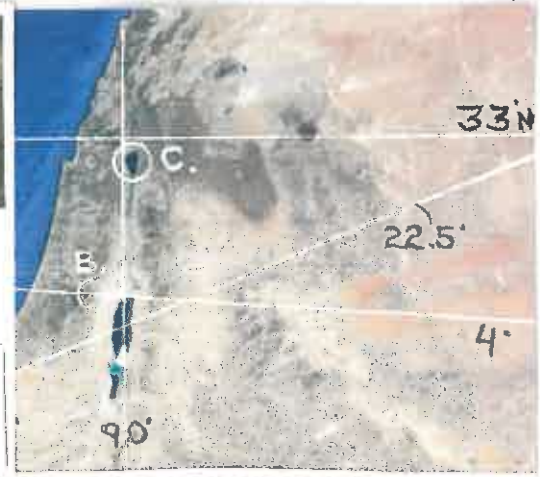
GREEK LETTERS SHOWN  
ARE "CH" AND "R", THEY  
PRE-DATE JESUS



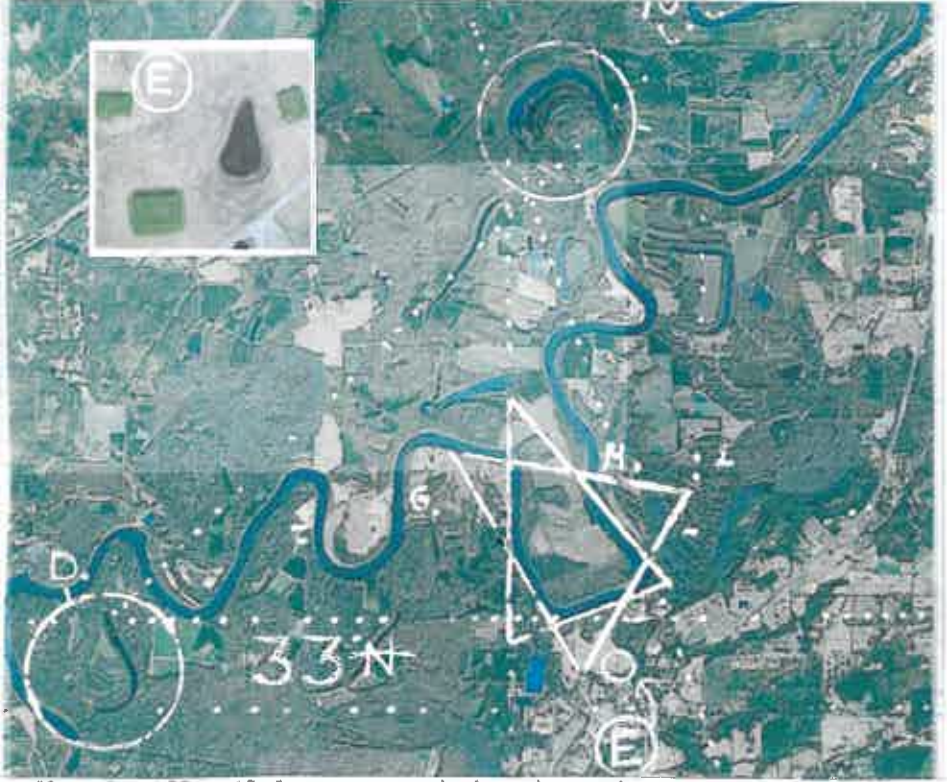
Mocchu Picchu  
Holy Stone looks  
like a shoe, and  
Sea of Galilee  
(see book.)



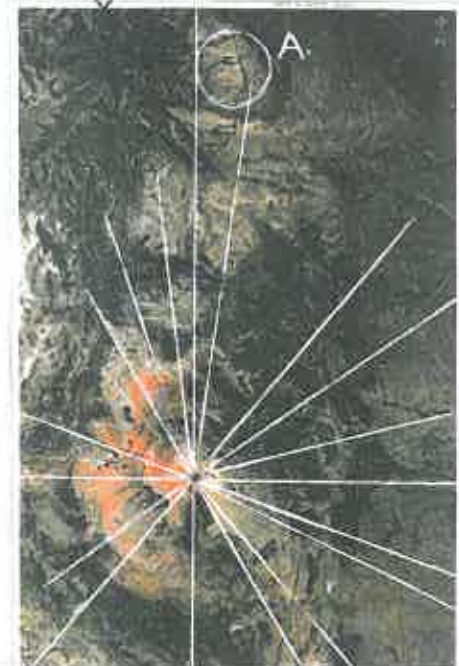
9.



Intersect of 33 parallel  
and the Easter Island 22.5 in Syria



Moundsville, Alabama geometric star river, crescent, tear lakes  
on the 33 northern parallel connecting to Holylands.



Macchu Picchu  
Holy River Cross  
on the 22.5 line.

MACHU PICCHU HOLY STONE

This photo was taken a hundred years ago by Hiram Bingham after the site was cleared of jungle. The guy standing in to give proportion is Ellwood Erdis. This photo was taken several feet lower than the photo in the book, so the top horizontal angle moved from 45 to 44. Everything else reads at same angles. Also, I don't know if this is a mirror image or the other photo.

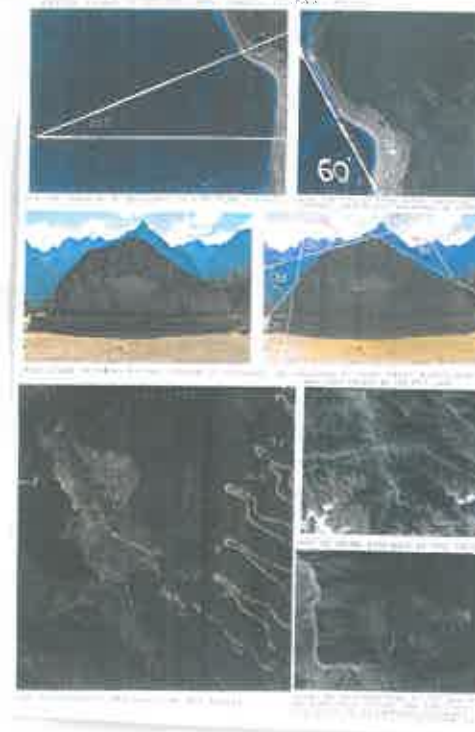
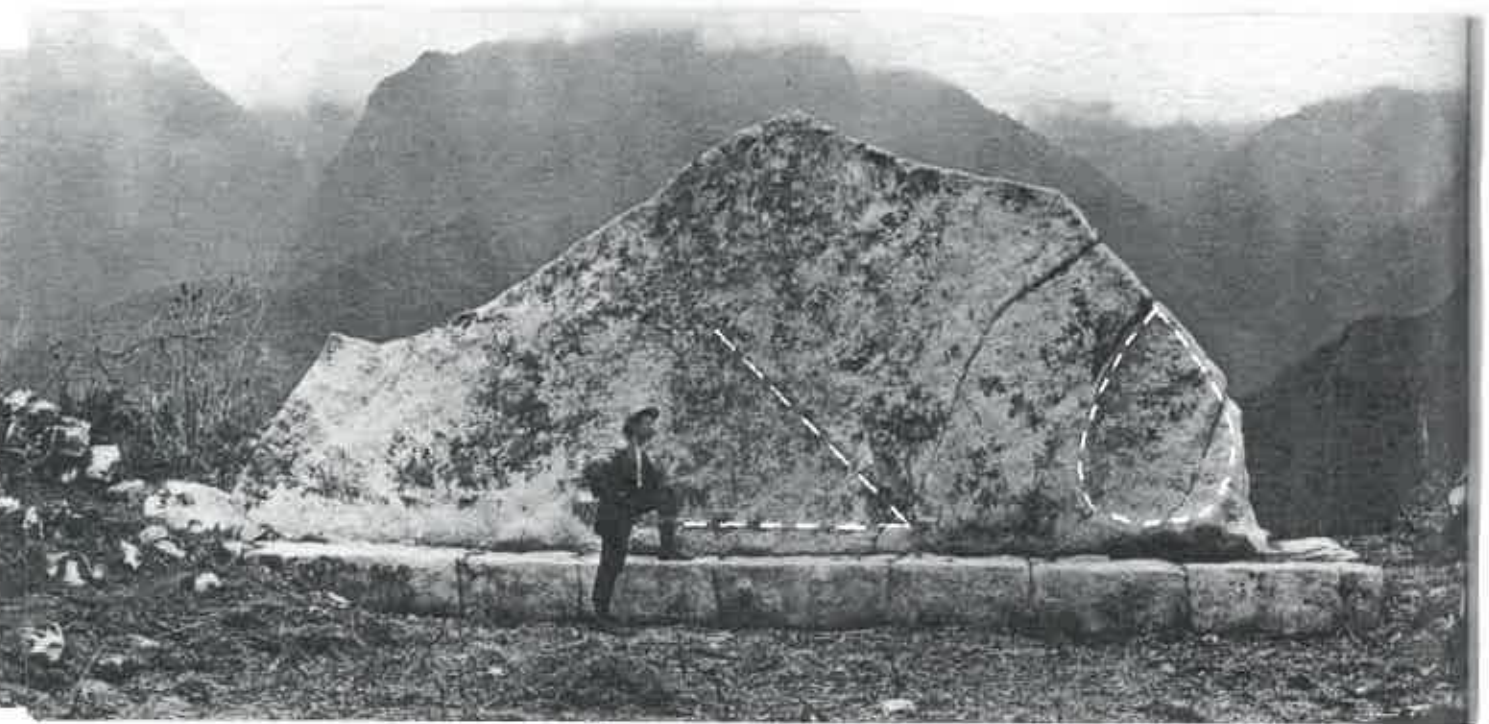
Note the cracks

Note how the "cracks" in the rock are mathematically lined-up from all radius points.

Note the shaded angle and the "tear" shape on the right (similar to the Hopi Stone) and Mars riddle  
[There should be a camera photographing this stone 24 hours a day, all year. I believe the shadows in the rock will reveal hidden signs, and perhaps a moving shadow-image when viewed in time-lapse.]

Note angle of the mountain in background matches angle of rock, 57 degrees. (D)  $90 - 57 = 33$

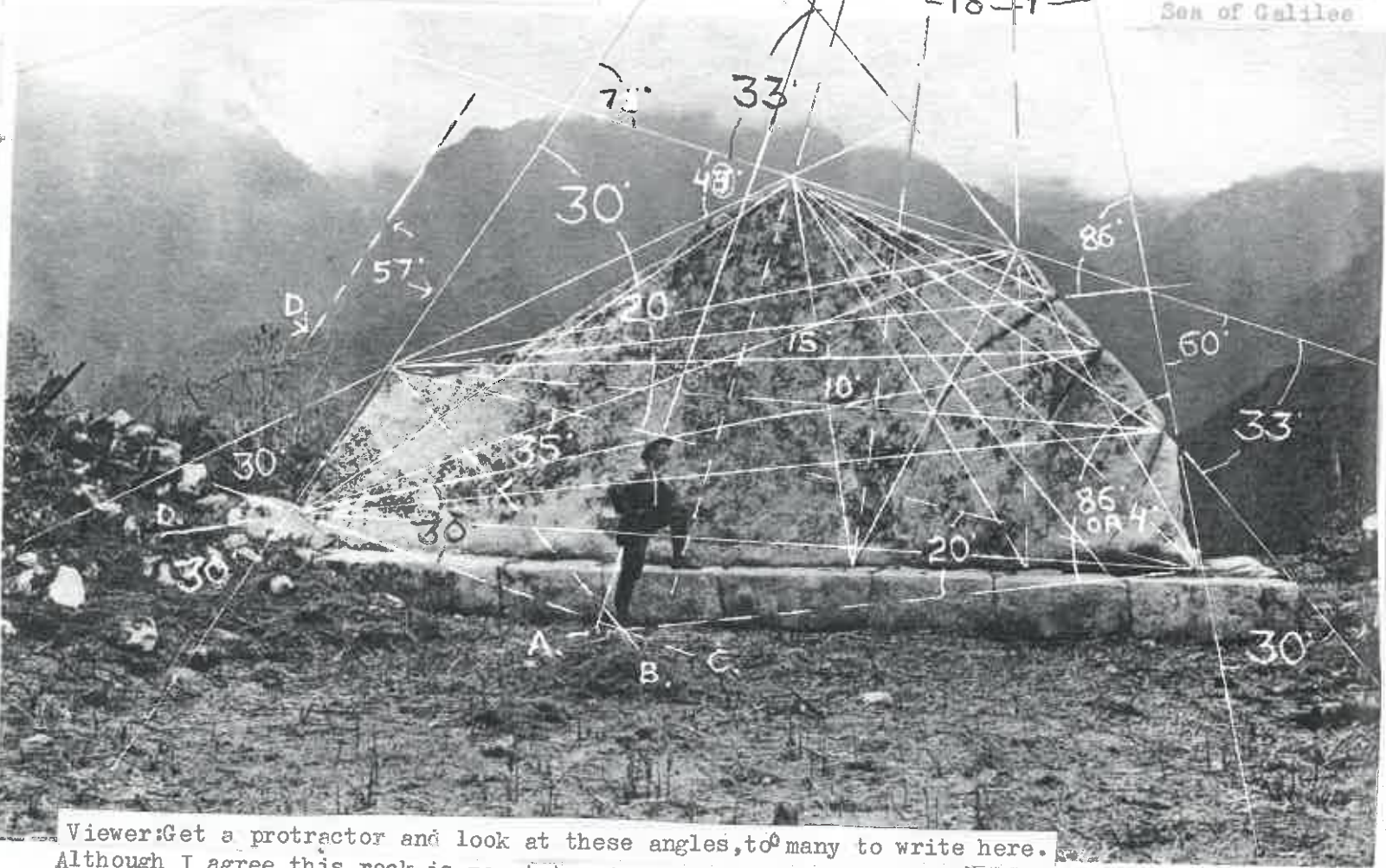
Note how every point on the rock alligns with other points, and the ends of the cracks, mathematically.



EASTER ISLAND RAFA NUI



Mochu Picchu Holy Stone looks like a shoe, and Sea of Galilee



Viewer: Get a protractor and look at these angles, too many to write here. Although I agree this rock is meant to mimic the mountains, I also believe it looks like a shoe, and is related to the Mars riddle 2, and other things in GOD's mind expanding puzzle.

It is no coincidence that GOD had Mr. Erdis put his foot on the 27 degree line. GOD wants to show us that HE controls all we do (as proven in these books of GOD's signs, and more.)  
Further, the fact that his foot is right on the 20 is added evidence to the shoe theme.  
The more GOD's great riddle is decoded, the more complicated it gets.

Showing the 67.5 degrees from Mount Sinai to Salt/Dead Sea geometric radius that includes the line that connects the north shore of the sea to Jerusalem north-most point of wall, the 4 degree.  
 This unusual 4 degree makes the angles of the sea hit at 67.5 and 90 angles.  
 See book for the complete story of the 4 degree line.



4- It continues east and hits at the Mount Everest Valley landmark intersect point. The valley on the West allows a 67.5 string-line to be run down it. It continues to the mountains of Buddh Gaya, where their geometry points to where Buddha was enlightened by GOD.  
 Note the 70 degree valley on east points to Mount Everest apex.  
 Old Jerusalem is 70 degrees from Mount Sinai.  
 West edge of Sea of Galilee is 72 from Mount Sinai

70